

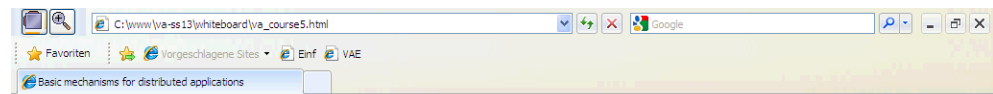
Script generated by TTT

Title: Distributed_Applications (18.06.2013)

Date: Tue Jun 18 14:30:46 CEST 2013

Duration: 88:30 min

Pages: 32



Issues

The following section discusses several important basic issues of distributed applications.

Data representation in heterogeneous environments.

Discussion of an execution model for distributed applications.

What is the appropriate error handling?

What are the characteristics of distributed transactions?

What are the basic aspects of group communication (e.g. algorithms used by ISIS) ?

How are messages propagated and delivered within a process group in order to maintain a consistent state?

External data representation

Time

Distributed execution model

Failure handling in distributed applications

Distributed transactions

Group communication

Distributed Consensus

Authentication service Kerberos

Generated by Targeteam



Authentication service Kerberos



Definition: Authentication means verifying the identities of the communicating partners to one another in a secure manner.

Kerberos has been developed at the MIT as part of the distributed framework Athena. Kerberos ist part of a variety authentication components. The Kerberos authentication protocol is based on the protocol by Needham and Schröder.

Introduction

[This course](#) provides only a short introduction to Kerberos (for further information, consult the [Kerberos Web-Site](#))

[Motivation](#)

[Security objects of Kerberos](#)

[Authentication process scenario](#)

Generated by Targeteam



Motivation



Kerberos assumes the following components

Client C,

Server S,

Key distribution center KDC, and

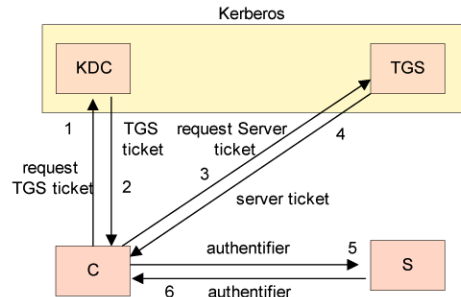
Ticket granting service TGS.

Goal of Kerberos

A client C requests the service of the server S. KDC and TGS are supposed to guarantee the secrecy and authenticity requirements.

1. KDC manages the secret keys of the registered components.
2. Within a session TGS provides the client C with tickets for authentication with servers of the distributed system.

Generated by Targeteam



Animation Kerberos

Generated by Targeteam



C → TGS with information	(C, T _C) _{K[C,tgs]}
	ticket(C, TGS) _{K[tgs]}
	S

TGS determines a random session key $K_{C,s}$, if

TGS ticket is still valid,

T_C is current, and

field C matches (of the first parameter and of the ticket).

Generated by Targeteam



Graphical representation

Description of exchanged messages

Problems with Kerberos

Manipulation of local computer clocks to circumvent the validity time of tickets

i.e. synchronization of clocks in distributed systems must be authorized and authenticated.

Example: user login with Kerberos

Generated by Targeteam



- Prof. J. Schlichter
 - Lehrstuhl für Angewandte Informatik / Kooperative Systeme, Fakultät für Informatik, TU München
 - Boltzmannstr. 3, 85748 Garching
 - Email: schlichter@in.tum.de
 - Tel.: 089-289 18654
 - URL: <http://www11.in.tum.de/>

Overview

Introduction

Architecture of distributed systems

Remote Invocation (RPC/RMI)

Basic mechanisms for distributed applications

Web Services

Design of distributed applications

Distributed file service

Distributed Shared Memory

Object-based Distributed Systems

Summary

Generated by Targeteam



Web services provide a standard means of communication among distributed software applications based on the Web technology. Standardization by the W3C community.

[Motivation - Example](#)

[Service Oriented Architecture - SOA](#)

[Web Services - Characteristics](#)

[Web Services Architecture](#)

[Simple Object Access Protocol \(SOAP\)](#)

[Web Services Description Language \(WSDL\)](#)

[Universal Description, Discovery, and Integration \(UDDI\)](#)

[REST](#)

[Web Service Composition](#)

[Adopting Web Services](#)

[Mashup](#)

Generated by Targeteam



Web services provide a standard means of communication among distributed software applications based on the Web technology. Standardization by the W3C community.

[Motivation - Example](#)

[Service Oriented Architecture - SOA](#)

[Web Services - Characteristics](#)

[Web Services Architecture](#)

[Simple Object Access Protocol \(SOAP\)](#)

[Web Services Description Language \(WSDL\)](#)

[Universal Description, Discovery, and Integration \(UDDI\)](#)

[REST](#)

[Web Service Composition](#)

[Adopting Web Services](#)

[Mashups](#)

Generated by Targeteam



SOA differs from today's component-based architectures in the following respects:

component-based	SOA
tight integration	loose horizontal integration
code-oriented development	process-oriented development
technical complexity of the IT infrastructure	interoperable architecture for business and IT
build to last	build to change

Generated by Targeteam



SOA evolved from component-based architectures: SOA is a collection services with a loose coupling and dynamic binding between services

[Characteristics](#)

[Layered Approach](#)

[Adopting Service Oriented Architecture \(SOA\)](#)

SOA blueprints initiative: define the requirements for a reference example that highlights the best SOA practices.

web services are an approach of building a SOA based on Web technologies

encapsulation of application components in web services

Generated by Targeteam





The adoption within organizations depends on a variety of issues:

Supporting Issues

- interoperable networked applications
- easier exchange of distributed data
- easier access of enterprise wide data
- availability of external services
- cross-organizational computing
- reduced maintenance cost
- small effects on existing operational systems

Restraining Issues

- different formats and semantics of data sources
- security issues due to network access
- standards are evolving and some are not fixed
- lack of understanding

The **Enterprise Services Bus (ESB)** refers to both a software architecture and a class of software products used for the realization of SOA.

messaging middleware that provides interoperability between enterprise applications via XML, Web Services interfaces and standardized rule-based routing of documents.

Mule is an Open Source ESB.

Generated by Targeteam



SOA evolved from component-based architectures. SOA is a collection services with a loose coupling and dynamic binding between services

Characteristics

Layered Approach

Adopting Service Oriented Architecture (SOA)

SOA blueprints initiative: define the requirements for a reference example that highlights the best SOA practices.

web services are an approach of building a SOA based on Web technologies

encapsulation of application components in web services

Generated by Targeteam



A Web Service is a standardized way of integrating Web-based applications.

Informal Definition

Integration

- allows integration of application functionality
 - within organizations
 - between business partners across organizational boundaries

Features of Web Services

Potential of Web Services

Web Services - Distributed Objects

Generated by Targeteam



Web Services

can live anywhere in the network

are described using a service-description language which

is in formal XML notation

covers all the details necessary to interact with the service (message formats for operations, transport protocols and location)

hides the implementation details of the service

are published to a registry of services

are available through its declared API and invocation mechanism

provide an entry point accessing local/remote services

Generated by Targeteam



A Web Service is a standardized way of integrating Web-based applications.

Informal Definition

Integration

- allows integration of application functionality
 - within organizations
 - between business partners across organizational boundaries

[Features of Web Services](#)

[Potential of Web Services](#)

[Web Services - Distributed Objects](#)

Generated by Targeteam

specific features of Web Services

- programmable: WS are accessed via a programmable interface
- self descriptive: meta data describe the WS.
- encapsulation: self contained application component.
- loosely coupled: communication via message passing using platform-independent and language-neutral protocols.
- location transparent: access to WS from different locations via network communication.
- protocol transparent: WS is based on Internet protocol suite; operation may support several protocols, e.g. HTTP, SMTP.
- composition: several WS may be combined into a new WS.

Web services are software components which enable loosely coupled, component-oriented, cross-technology application implementations.

Web Services are document-centric

- communication is by sending documents from the server and back.
- most properties are associated with the document itself, and not the service.

Generated by Targeteam



A Web Service is a standardized way of integrating Web-based applications.

Informal Definition

Integration

- allows integration of application functionality
 - within organizations
 - between business partners across organizational boundaries

[Features of Web Services](#)

[Potential of Web Services](#)

[Web Services - Distributed Objects](#)

Generated by Targeteam

Web services and distributed objects

- have some sort of description language
 - what to call: operations, signatures, return types, exceptions.
 - how to make an invocation.
- compilers generate client stub and server skeleton
- both have well-defined network interactions
- both have a similar mechanism for registering and discovering available components.

Differences

- Web services are usually designed for stateless computing.
 - Distributed objects enable stateful computing.
- Web services are a technology supporting the integration on the Web.
 - Distributed objects are mainly for intranet.

Generated by Targeteam



Definition: A **Web service** (W3C) is a software system identified by a **URI**, whose public interfaces and bindings are defined and described using XML. Its definition can be discovered by other software systems. These systems may then interact with the Web service in a manner prescribed by its definition, using XML based messages conveyed by internet protocols.

A **Web Service** is a standardized way of integrating Web-based applications using XML, SOAP, WSDL and UDDI open standards over an Internet protocol backbone.

XML: tag the data

SOAP: transfer the data

WSDL: describe the available services

UDDI: list the available services.

simplified view : a web service is a remote procedure call over the internet using XML messages.

[Web Services interoperability Stack](#)

[Basic Architecture](#)

[Roles](#)

[Operations of the Web Service Architecture](#)

[Basic Standard Technologies](#)

[Message Exchange Patterns](#)

Generated by Targeteam

Compositional	BPEL4WS, WS-Notification
Quality of Experience	WS-Security, WS-Transactions, ..
Description	WSDL, UDDI, WS-Policy, ..
Messaging	XML, SOAP, WS-Addressing
transport	HTTP, SMTP, ...

Generated by Targeteam



defines an interaction between software components as an exchange of messages between service requesters and service providers.

Functions of the architecture

exchanging messages.

describing Web services.

publishing and discovering Web service descriptions.

The service: a Web service is an interface; implementation of it is the service.

The service description: details of the interface and the implementation of the service.

Generated by Targeteam



The basic Web service architecture models the interactions between three roles

Service Provider

processes a Web service request.

Service Discovery Agency

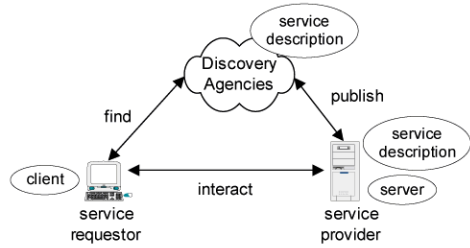
agency through which a Web service description is published and made discoverable.

Service Requestor

requests the execution of a Web service.

Generated by Targeteam



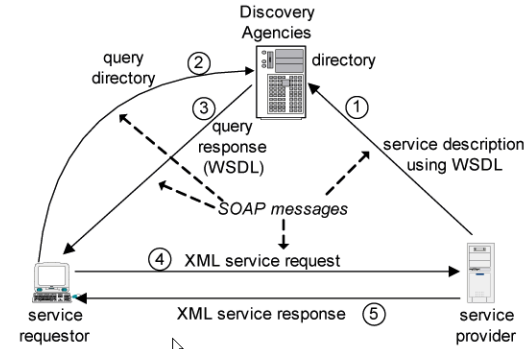


Publish : a service needs to publish its description such that a requestor can subsequently find it.
Find : the requestor queries a registry for the required service and retrieves a service description.
Interact : a service needs to be invoked and the results are returned.

Generated by Targeteam

Web services are based on 3 basic standards

- WSDL: Web Services Description Language.
- UDDI: Universal Description, Discovery and Integration
- SOAP: Simple Object Access Protocol



Steps involved in providing and consuming a service

1. a service provider describes its service using WSDL.
2. a service requestor queries the directory to locate a service and determine how to communicate with that service.
3. directory sends service description to service requestor

define the sequence of one or more messages exchanged between service requestor and service provider.

Examples are: one-way, request/response, broadcast.

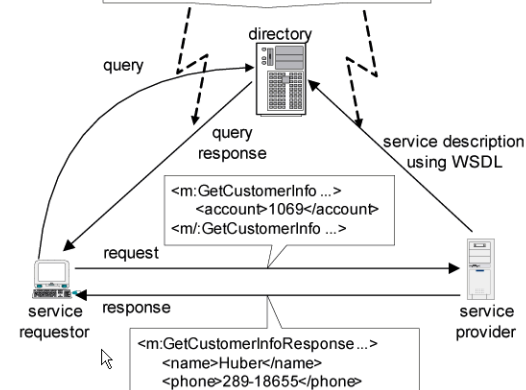
The Web service architecture may support different interaction scenarios.

- [Peer-to-Peer](#)
- [Direct Interaction](#)
- [Intermediary](#)

Generated by Targeteam

WSDL uses XML to define messages.

```
<element name="CustomerInfoRequest">
  <element name="account" type="string">
    .....
  </element>
</element>
<element name="CustomerInfoResponse">
  <element name="name" type="string"/>
  <element name="phone" type="string"/>
  <element name="street" type="string"/>
  <element name="city" type="string"/>
  .....
</element>
```





Message Exchange Patterns



define the sequence of one or more messages exchanged between service requestor and service provider.

Examples are: one-way, request/response, broadcast.

The Web service architecture may support different interaction scenarios.

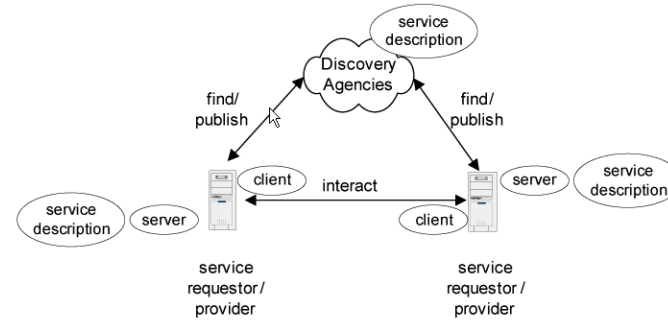
- [Peer-to-Peer](#)
- [Direct Interaction](#)
- [Intermediary](#)



Peer-to-Peer



Generated by Targeteam

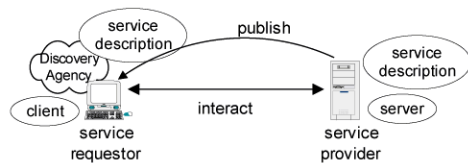


In the peer-to-peer scenario, each Web service instance serves in both the service requestor and service provider roles.

Generated by Targeteam



Direct Interaction



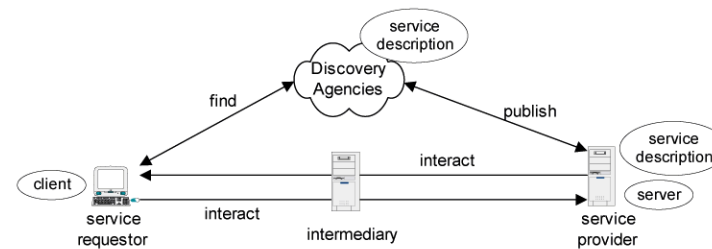
The role service requestor and discovery agency are fulfilled by the client.



Intermediary



Generated by Targeteam



Intermediaries may perform additional functions (besides the operations defined by the message exchange patterns) with a message such as routing, security, management.

Generated by Targeteam



Web services provide a standard means of communication among distributed software applications based on the Web technology. Standardization by the W3C community.

[Motivation - Example](#)

[Service Oriented Architecture - SOA](#)

[Web Services - Characteristics](#)

[Web Services Architecture](#)

[Simple Object Access Protocol \(SOAP\)](#)

[Web Services Description Language \(WSDL\)](#)

[Universal Description, Discovery, and Integration \(UDDI\)](#)

[REST](#)

[Web Service Composition](#)

[Adopting Web Services](#)

[Mashups](#)